



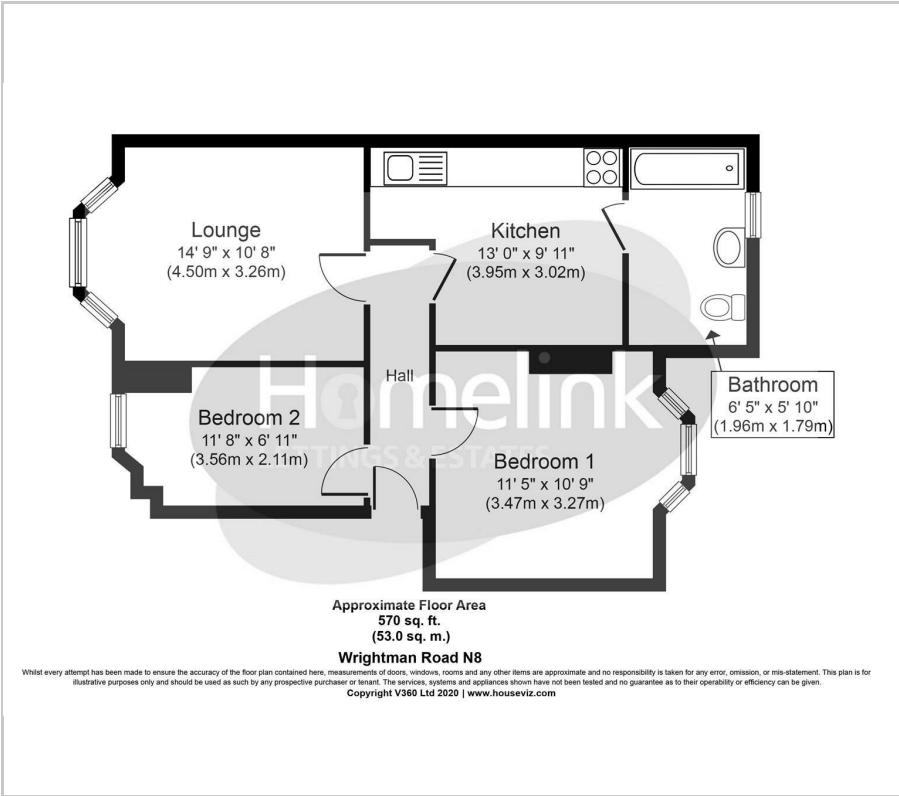
Station Mansions, Wightman Road, N8

£1,800 PCM

2 1 1 C



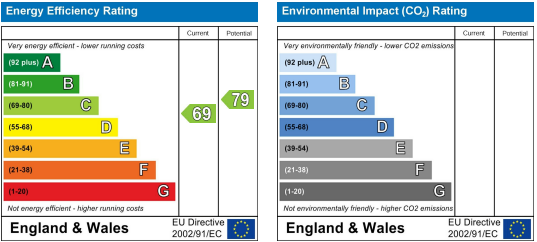
Floor Plan



Area Map



Energy Efficiency Graph



Viewing

Please contact our Homelink Lettings & Estates Office on 0208 882 2112 if you wish to arrange a viewing appointment for this property or require further information.

- Two Bedroom Flat
- Wooden Flooring
- Eat-in Kitchen
- Fully tiled bathroom
- Available from January
- Set on First Floor
- Close to Turnpike Lane Station
- Close to local shops
- Part Furnished
- Don't Miss Out



**\*\*CLOSE TO 2 STATIONS\*\***Homelink are delighted to offer for rent this first floor two bedroom apartment of a well maintained Victorian Mansion building.

Living space comprises of a separate reception room, two bedrooms, fully fitted kitchen/diner and modern three piece white bathroom suite. The property benefits from double glazing, gas central heating, some original period features and natural décor throughout.

Station Mansions is located on Wightman Road and the sought-after and increasingly popular North London hotspot convenient for the vibrant shopping facilities of Crouch End Broadway. Excellent links to the City and West End via nearby Hornsey BR and Turnpike Lane Underground Station (Piccadilly Line zone 3).

To arrange a viewing, call and speak to one of our friendly lettings team.

Haringey C/Tax Band - C  
2025/26 C/Tax - £1,962.61



These particulars, whilst believed to be accurate are set out as a general outline only for guidance and do not constitute any part of an offer or contract. Intending purchasers should not rely on them as statements of representation of fact, but must satisfy themselves by inspection or otherwise as to their accuracy. No person in this firms employment has the authority to make or give any representation or warranty in respect of the property.

Homelink Lettings and Estates  
62 Chase Side, London N14 5PA  
0208 882 2112 [homelink.co.uk](http://homelink.co.uk)

